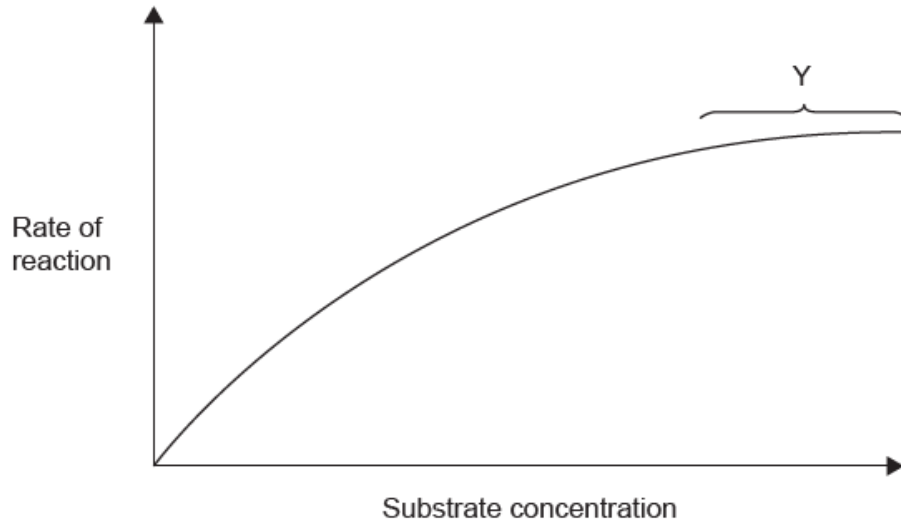


SL Paper 1

The graph shows the effect of increasing the substrate concentration on the rate of an enzyme-catalysed reaction. What is occurring during the phase indicated by section Y of the graph?



- A. The active site of the enzyme is saturated.
- B. The enzyme becomes denatured.
- C. The substrate concentration has risen too high.
- D. The optimum rate is reached.

Markscheme

A

Examiners report

[N/A]